

# GLENVILL HOMES



## GRANDVIEW

\* Artist impression

**STAGE 3A**  
LOT 3075 - 3082

 Stockland | Grandview



Image from Glenvill Homes Jubilee Display home

## A bold take on contemporary living

At Glenvill Homes we are driven to create sophisticated, outstanding townhomes and bring excellence within reach of hardworking Australian families. Our townhomes are expertly designed and built in leading estates, ready for you to move in.

## Count on us

At Glenvill Homes we never compromise on quality. We offer exceptional value paired with the best experience possible. We believe that the quality of our homes should be matched by the excellence of the process.



### SERVICE

The service that we provide throughout the journey must be as exceptional as the home itself. Each of our team members is passionate about providing outstanding results and exceeding our customer's expectations.



### QUALITY

Our stringent QA measures combined with experienced Site Managers and trade partners ensure that we deliver the highest standard townhomes.



### DESIGN

We pride ourselves on our creative culture, bringing inspiration from far and wide to fulfil our unique and contemporary vision. Our commitment to offer affordable homes is matched by our desire to create stunning, exceptional family-oriented homes.



## Designed by lifestyle

— At Glenvill Homes our passion for striking, contemporary design is only matched by our desire to deliver homes filled with warmth and light.

Walking into one of our townhomes, you will be struck by the balance of design excellence and functionality throughout.

You will be greeted by clean lines, sleek surfaces and user-friendly spaces wherever you look.

A Glenvill townhome comes move-in-ready complete with full turnkey solutions to make your life as easy and comfortable as possible. Enjoy tasteful landscaping, heating & cooling and quality appliances, all considered for your lifestyle.

Glenvill townhomes are built for your life today and will adapt beautifully as your needs change in the future.

# Glenvill Townhomes at Grandview

Glenvill Townhomes at Grandview consists of eight double storey homes expertly designed to stand the test of time. These exclusive homes feature an open plan combined kitchen, living and dining with generous storage throughout the home. Master bedrooms have their own ensuite and walk-in wardrobe. Complete with a backload, double garage and a patio, these homes will suit any family — now and tomorrow.

Grandview is located in the heart of Melbourne's fast-growing western corridor, only 28km from the CBD and 26.2km to Melbourne Airport. Enjoy convenient connections to all the essentials in life, from local shops and transport to schools, parklands and a thriving community.

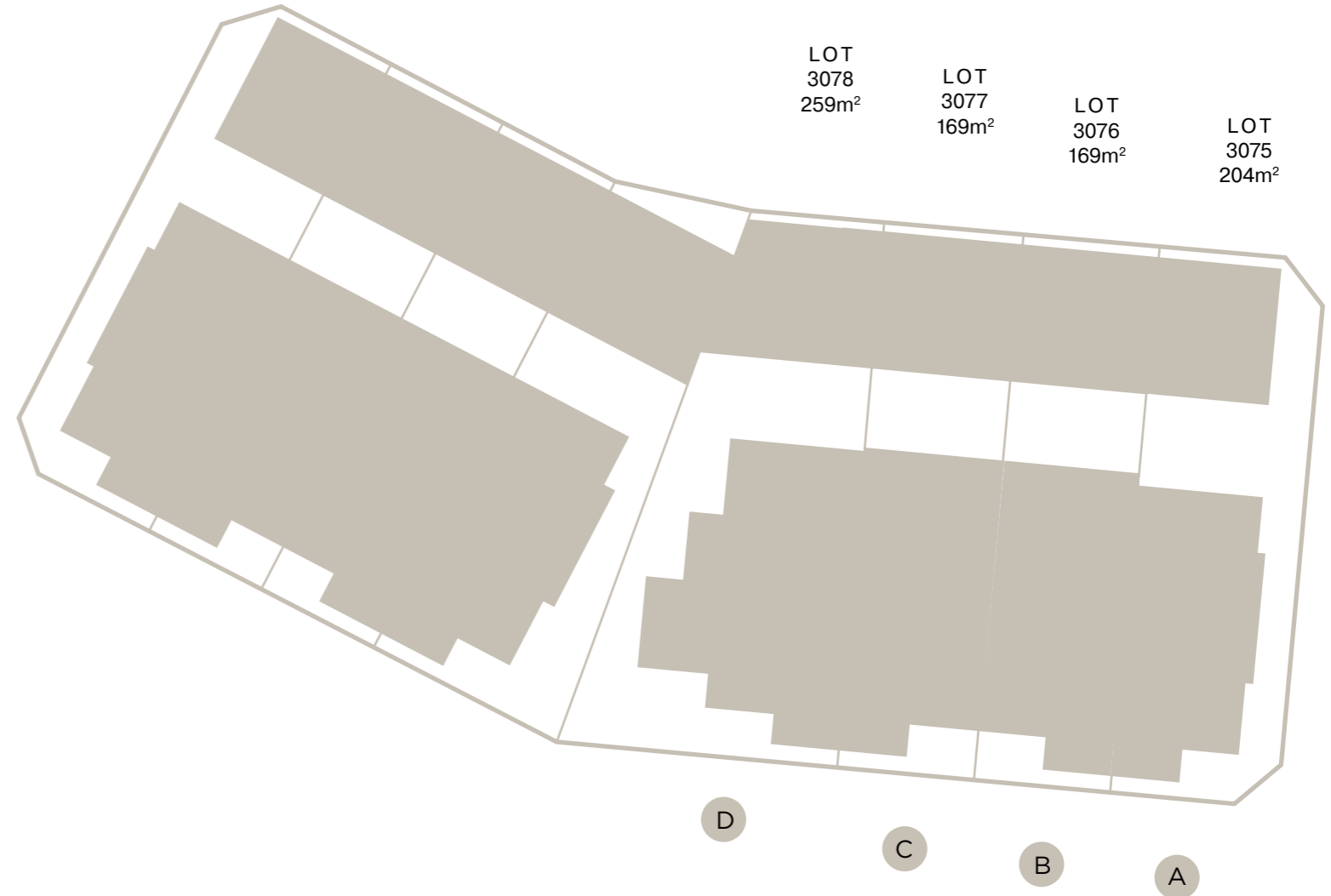


Image from Glenvill homes Jubilee Display home



# Select your townhome

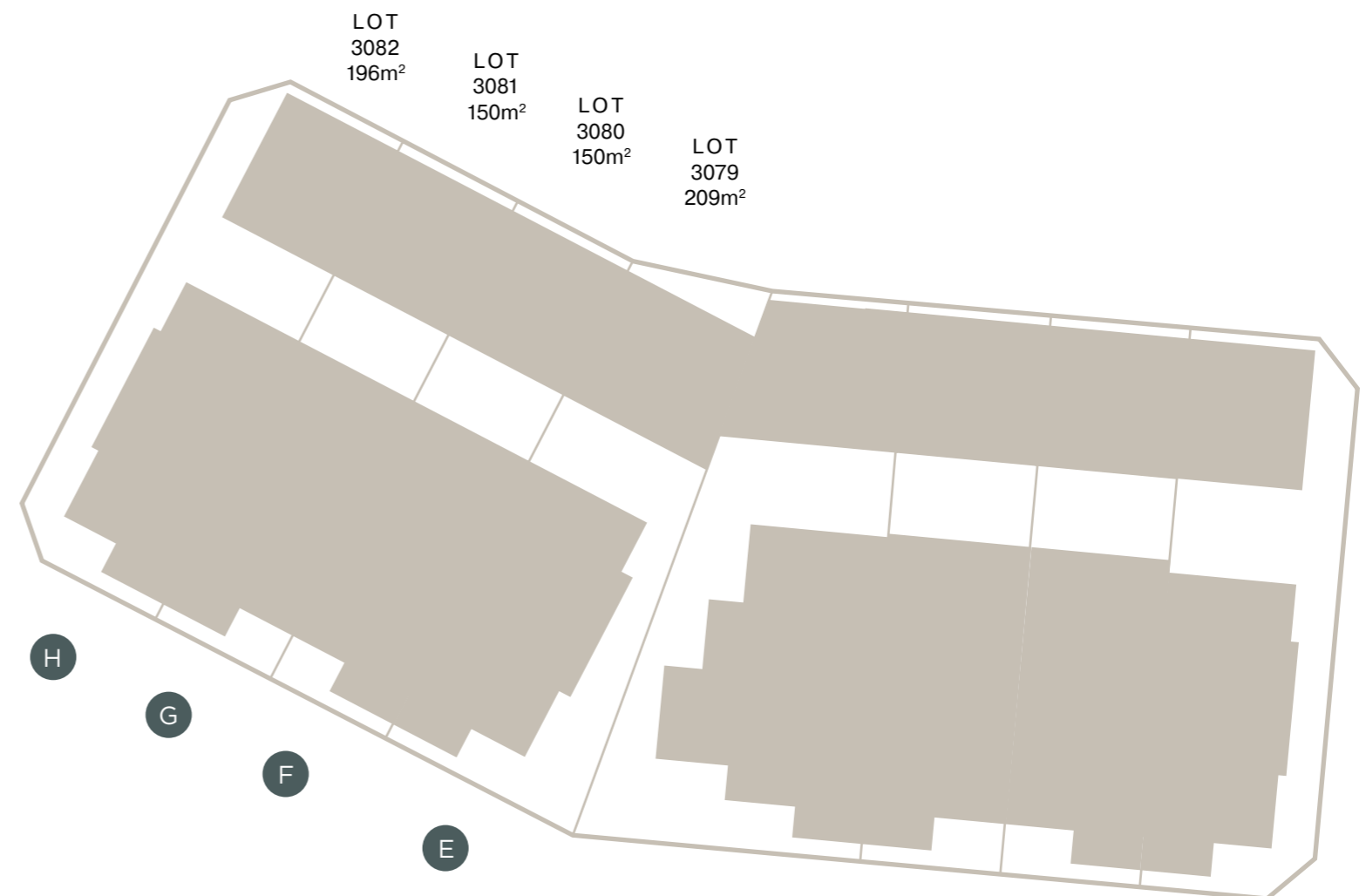
Our floorplans are meticulously designed to maximise space and deliver homes filled with warmth and light. Each townhome reflects a refined aesthetic, ensuring a stylish and comfortable home for years to come.





# Select your townhome

Our floorplans are meticulously designed to maximise space and deliver homes filled with warmth and light. Each townhome reflects a refined aesthetic, ensuring a stylish and comfortable home for years to come.

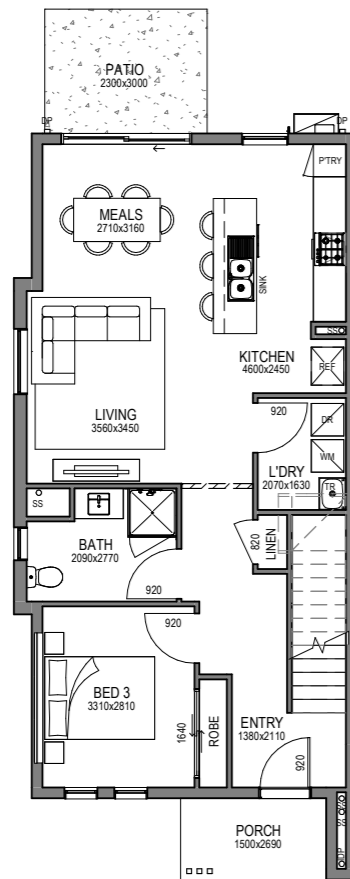
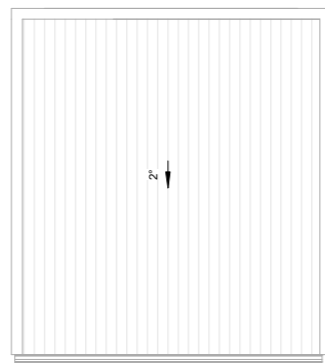
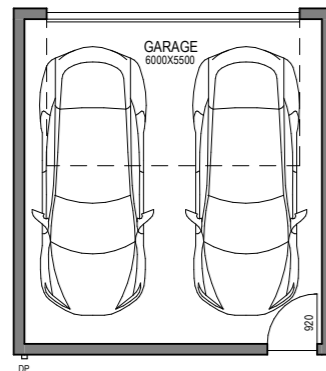


# Elwood

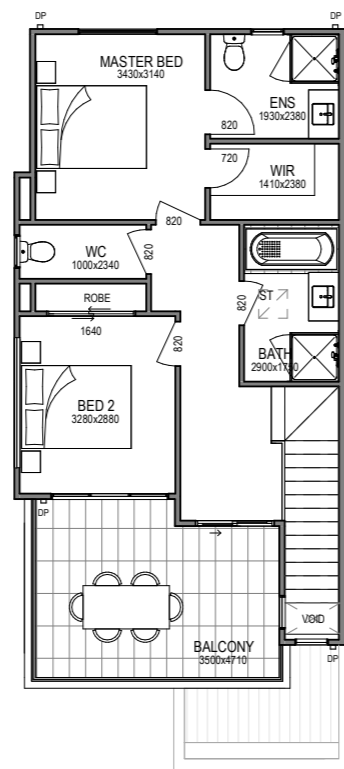
## LOTS 3075 & 3082



**Build Area 20.5sq**  
 Lot Area:  
 Lot 3075 204m<sup>2</sup>  
 Lot 3082 196m<sup>2</sup>



Ground Floor



First Floor

\*Lot 3075 floorplan to be mirrored.



\* Artist impression

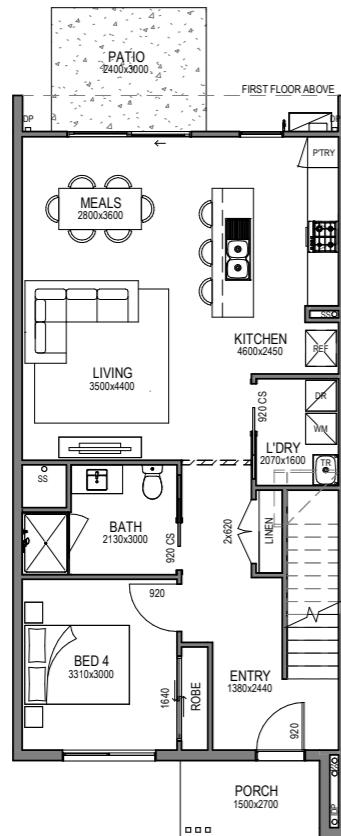
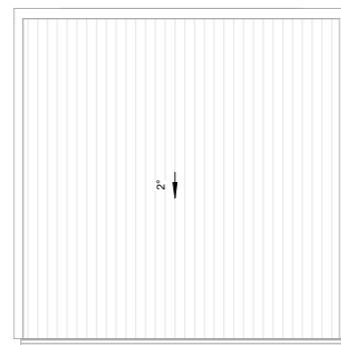
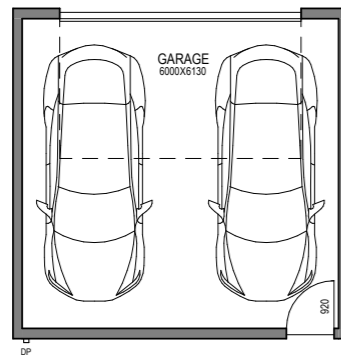


# Sorrento

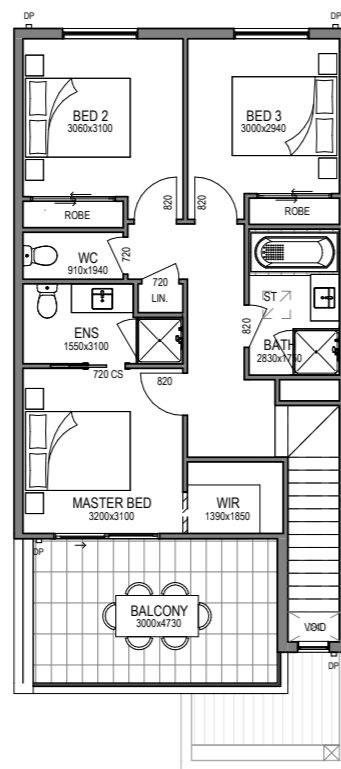
## LOTS 3076 & 3077



**Build Area 22.4sq**  
 Lot Area 169m<sup>2</sup>



Ground Floor



First Floor

\*Lot 3077 floorplan to be mirrored.



\* Artist impression



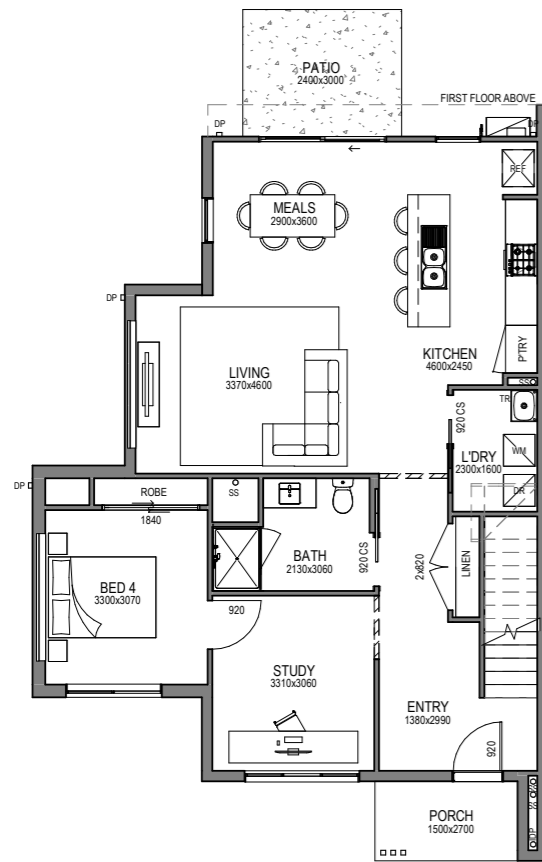
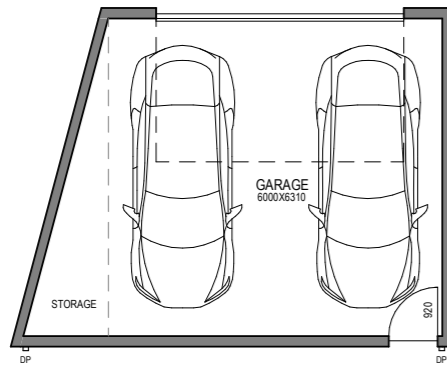


# Burleigh

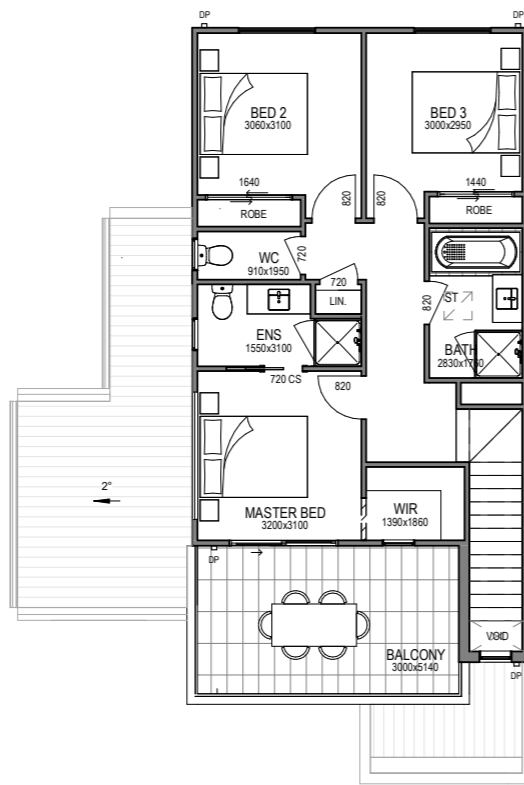
## LOT 3078



**Build Area 25sq**  
 Lot Area 259m<sup>2</sup>



Ground Floor



First Floor



LOT 3078

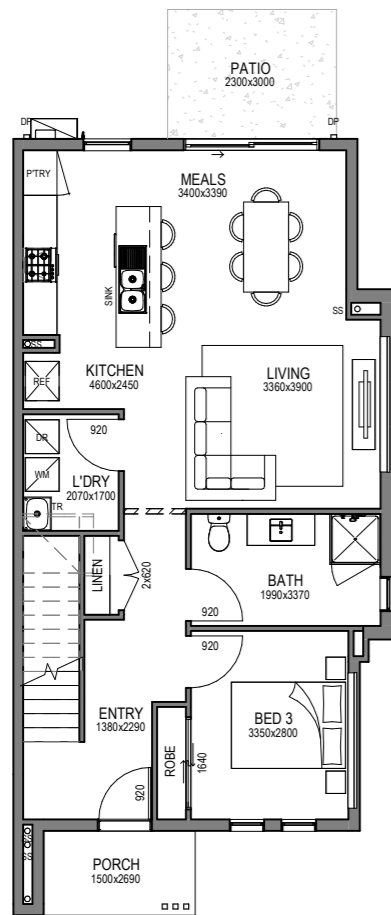
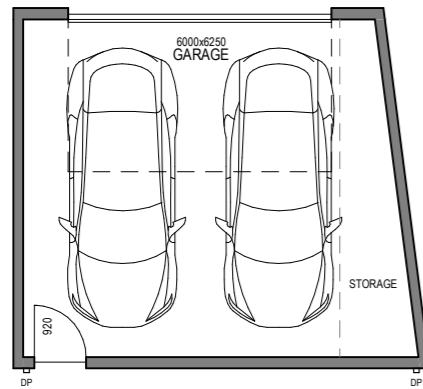
\* Artist impression

# Flinders

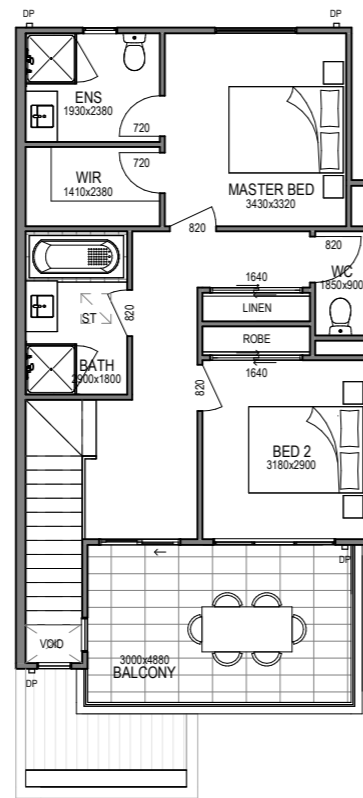
## LOT 3079



**Build Area 21.9sq**  
 Lot Area 209m<sup>2</sup>



Ground Floor



First Floor



LOT 3079

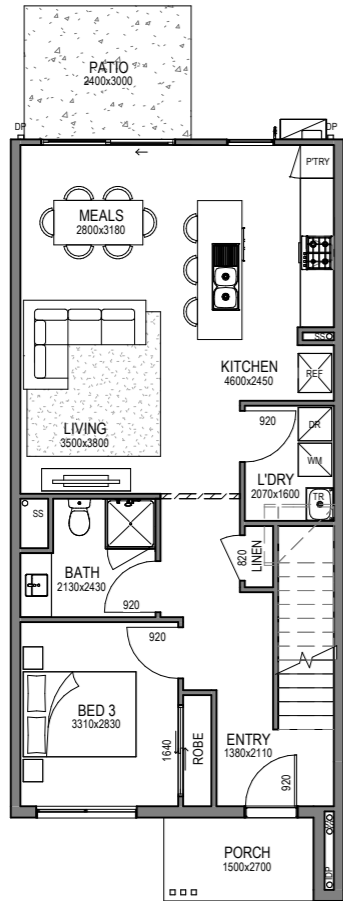
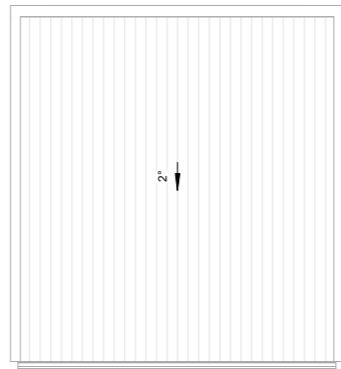
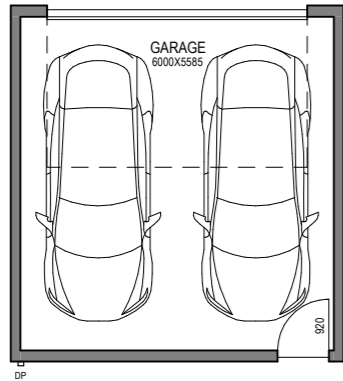
Artist impression

# Kingston

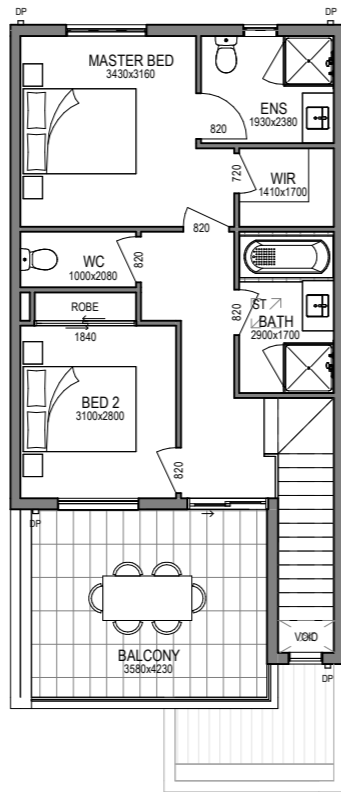
## LOTS 3080 & 3081



**Build Area 20.2sq**  
 Lot Area 150m<sup>2</sup>



Ground Floor



First Floor

\*Lot 3081 floorplan to be mirrored.



\* Artist impression





## Location & Lifestyle

— Located only 28km west of Melbourne's CBD, Grandview has been carefully designed to achieve the perfect balance between nature and convenience, creating one of Victoria's most connected and liveable new communities.

From a last-minute dash to the shops to an afternoon of retail therapy, Grandview has you covered. Visit the proposed convenience centre or the future Westfield Town Centre down the road, for all your shopping dining and entertainment experiences.

Get active at Grandview with thoughtfully designed walking and cycling paths, a proposed sporting field, three future local parks, and access to the 50 hectare Mt. Atkinson Conservation Reserve where you can energise your body and clear your mind.

Live in a well-connected community and enjoy the benefits of a short drive to Rockbank Railway Station, easy access to the Western Freeway, and future employment opportunities at future The Melbourne Business Park™.

# Grandview aerial overview





## Choose your style

— Make a confident statement and strike the right balance of style and comfort in your new townhome. Our designs and carefully curated colour schemes are influenced by the relaxed Australian lifestyle. Simple, iconic designs that capture the feeling of now yet are designed to pass the test of time. Choose between a light or a dark interior as the perfect canvas to let your personal style take the lead.

# Colour scheme — light



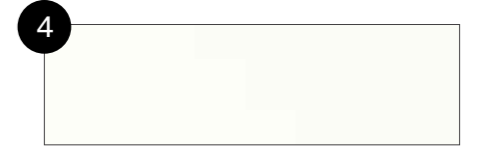
**1** LAMINEX - CLASSIC OAK 8537  
Overhead cabinets in kitchen – cabinets in bathroom, ensuite and powder room



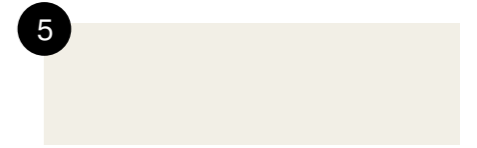
**2** CAESARSTONE - WHITE SHIMMER  
Kitchen, bathroom, ensuite and powder room benchtops



**3** NATIONAL TILES - WHITE GLOSS 250X400  
Laid stack bond horizontal kitchen, laundry, bathroom, ensuite and powder room



**4** BUILDERS WHITE  
Ceiling



**5** HAYMES - WHITE ON WHITE  
Walls, architraves, skirtings and doors (Gloss)



**6** PERFECT - TIMBER FLOORS, LAMINATE - NEWHAVEN  
To entry, kitchen, meals and family



ROYAL PARADE MARCH NELSON/300 LATTE  
Bedrooms and living room if applicable

# Colour scheme — light



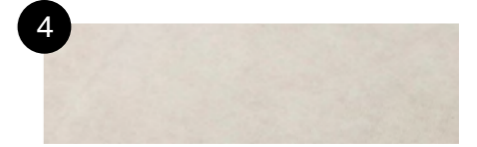
**1** LAMINEX - CLASSIC OAK 8537  
Overhead cabinets in kitchen – cabinets in bathroom, ensuite and powder room



**2** LAMINEX - BRUSHED ALUMINIUM  
Plinth



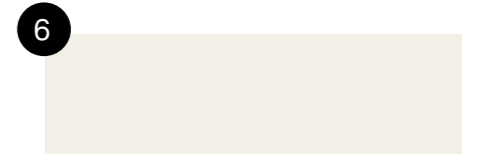
**3** NATIONAL TILES - WHITE GLOSS 250X400  
Laid stack bond horizontal kitchen, laundry, bathroom, ensuite and powder room



**4** NATIONAL TILES - ATLAS LATTE MATT 450X450  
Laid stack bond in laundry, bathroom, ensuite and powder room.



**5** BUILDERS WHITE  
Ceiling



**6** HAYMES - WHITE ON WHITE  
Walls, architraves, skirtings and doors (Gloss)

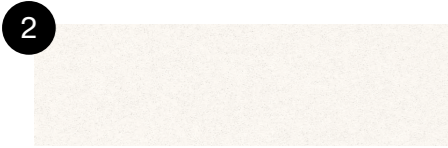




# Colour scheme — dark



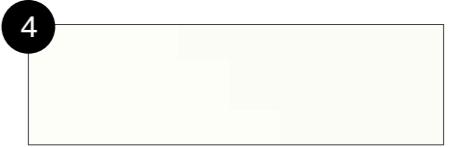
**1**  
LAMINEX - LUSTROUS ELM 274  
Overhead cabinets in kitchen – cabinets in bathroom, ensuite and powder room



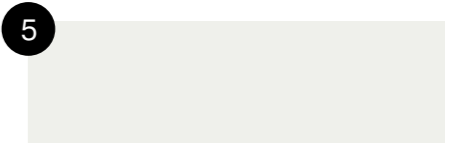
**2**  
CAESARSTONE - SNOW  
Kitchen, bathroom, ensuite and powder room benchtops



**3**  
NATIONAL TILES - WHITE GLOSS 250X400  
Laid stack bond horizontal kitchen, laundry, bathroom, ensuite and powder room



**4**  
BUILDERS WHITE  
Ceiling



**5**  
HAYMES - GREYOLOGY 1  
Walls, architraves, skirtings and doors (Gloss)



**6**  
PERFECT - TIMBER FLOORS, LAMINATE - OTWAY  
To entry, kitchen, meals and family



ROYAL PARADE  
URBAN GREY - 760  
Bedrooms and living room if applicable

# Colour scheme — dark



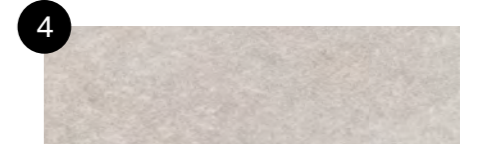
**1** LAMINEX - LUSTROUS ELM 274  
Overhead cabinets in kitchen – cabinets in bathroom, ensuite and powder room



**2** SUPPLIER - BRUSHED ALUMINIUM  
Plinth



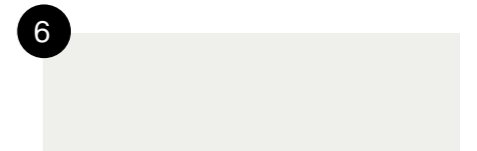
**3** NATIONAL TILES - WHITE GLOSS 250X400  
Laid stack bond horizontal kitchen, laundry, bathroom, ensuite and powder room



**4** NATIONAL TILES - ATLAS GREIGE MATT 450X450  
Laid stack bond in laundry, bathroom, ensuite and powder room.



**5** BUILDERS WHITE  
Ceiling



**6** HAYMES - GREYOLOGY 1  
Walls, architraves, skirtings and doors (Gloss)





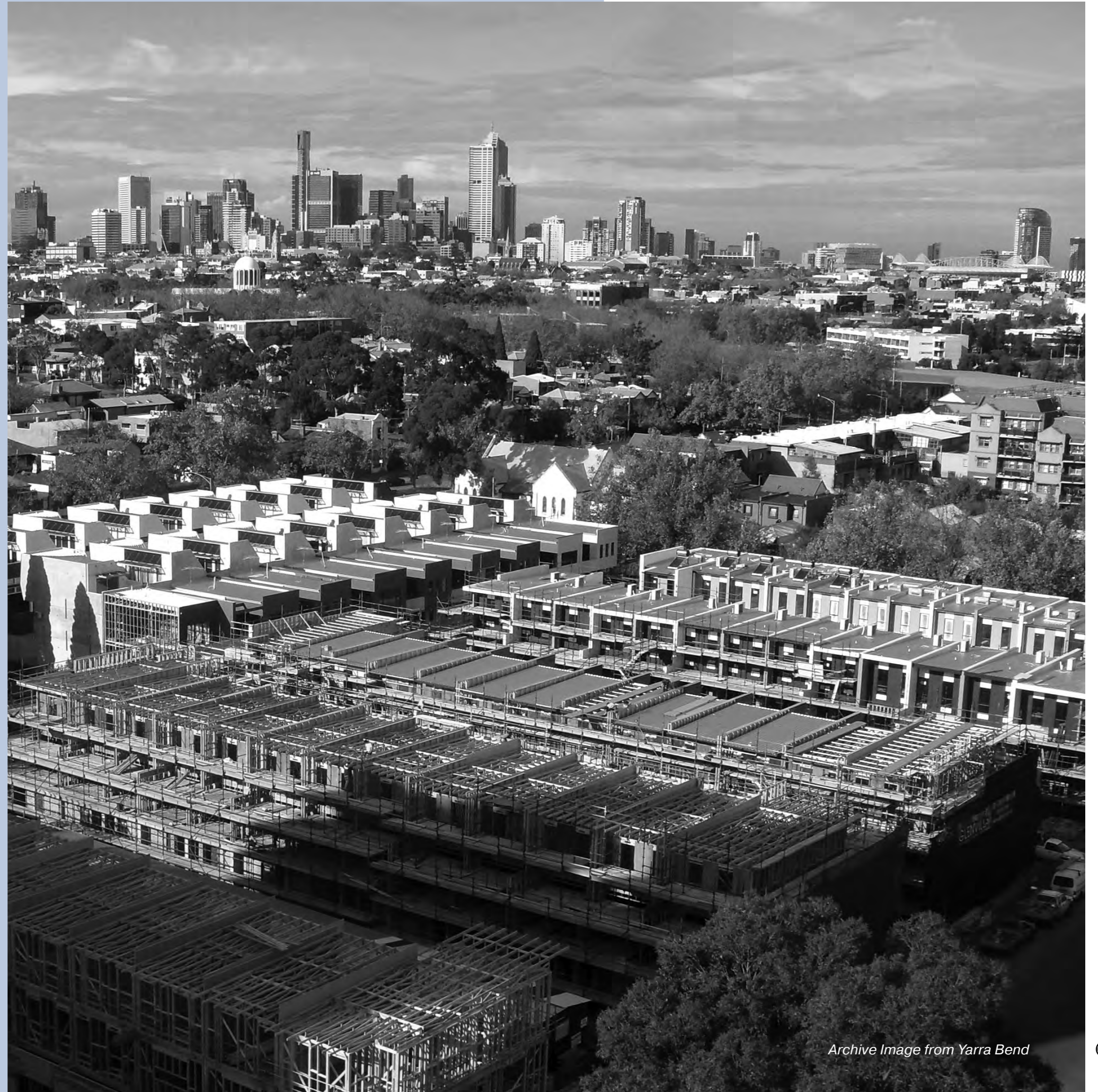
# Six decades of excellence

— Glenvill Homes form part of the Glenvill Group, a dynamic, multi-faceted company encompassing all aspects of design, development and construction.

As a privately-owned Australian company with over six decades of experience in designing and building quality homes Glenvill Group has built an industry leading reputation which continues to stand the test of time.

At Glenvill Homes we are driven to create contemporary homes and bring excellence within reach of Australian families. We see our homes as an integral part of their dynamic and ever-changing lifestyles. Our passion for striking design is only matched by our desire to deliver homes filled with functionality throughout.

Glenvill Homes collaborates with some of Australia's most recognised developers to identify suitable sites and tailored outcomes that are mutually beneficial for all stakeholders.



# GLENVILL HOMES



## CONTACT

0424 111 360  
[glenvillhomes.com.au](http://glenvillhomes.com.au)

While best endeavours have been used to provide information in this publication that is true and accurate, Glenvill Homes, its consultants, agents and related entities accept no responsibility and disclaim all liability in respect to any errors or inaccuracies it may contain. Prospective purchasers should make their own enquiries to verify the information contained herein.